



MAINTENANCE AND CARE INSTRUCTIONS

Olympia products are designed and engineered under strict quality standards. Regular and proper care of our products will ensure years of trouble free service. To clean, simply wipe with a damp, soft cloth. Do not use abrasive or harsh cleaners as they may result in finish damage. Regularly remove and clean minor debris from the aerator.

OLYMPIA FAUCETS, INC. LIMITED LIFETIME WARRANTY *

Olympia Faucets, Inc. warrants its products to the original consumer purchaser to be free from defects in material and workmanship as long as the consumer purchaser owns it. Dated proof of purchase must accompany all warranty claims. PVD finishes carry a lifetime warranty in residential service.

Olympia Faucets, Inc. will replace, free of charge, to the original consumer purchaser, any and all parts that prove defective under normal installation, use, and service. Damage as a result of misuse, abuse, accident, or improper installation, will consequentially void this warranty. Replacement parts can be obtained from your local dealer or directly from Olympia Faucets. Olympia Faucets, Inc. recommends using a certified plumber for all faucet installation and repair.

This warranty is limited to replacement of defective parts only. Incidental and consequential damages, labor charges, repair, or replacement costs are expressly excluded. Some states do not allow the exclusion or limitation of incidental or consequential damages, so the above limitation may not apply to you. This warranty gives you specific legal rights, as you may have other rights of which vary from state to state.

Installation or maintenance and cleaning must be in compliance with instructions furnished with every Olympia product. If you find a problem with your product, please immediately contact your nearest Olympia Faucets, Inc. dealer or sales representative.

* 2 year limited warranty on commercial and multi-family projects.



INSTALLATION AND MAINTENANCE INSTRUCTIONS FOR OLYMPIA HANDHELD SHOWER SET

PRODUCT NUMBERS

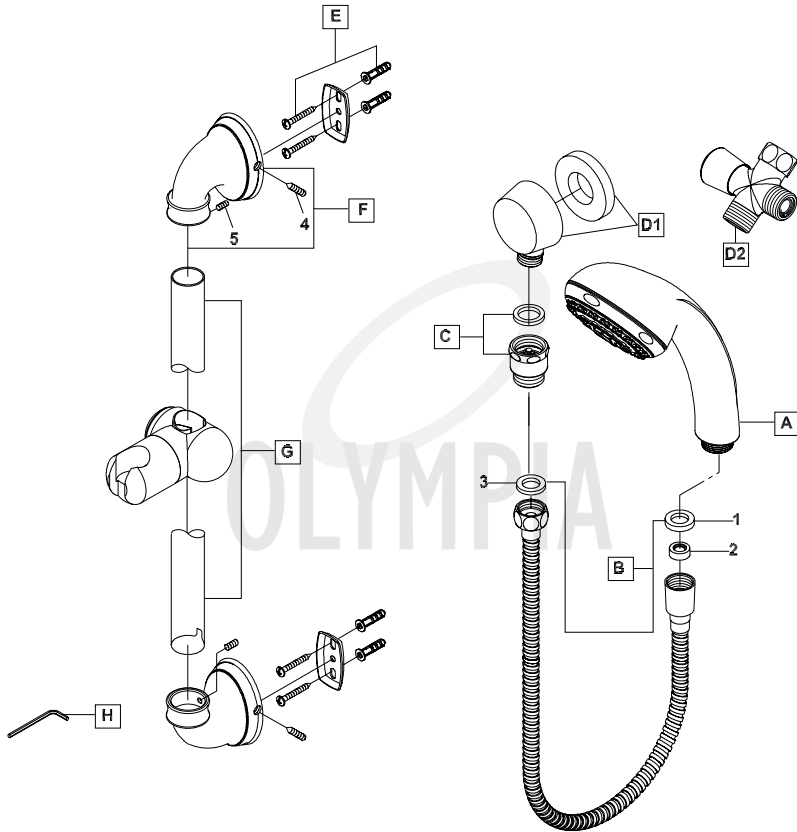
#P-4430 Handheld Shower Set

#P-4420 Handheld Shower Set With Two Way Diverter





Thank you for purchasing this quality product. Olympia products are rigorously tested to provide long service under normal conditions. Prior to installation, familiarize yourself with this parts diagram. Make sure that you have all of the illustrated parts for your Olympia product before installation.



ITEM #	DESCRIPTION	ITEM #	DESCRIPTION
3	OP-460025 Washer	A	OP-660003 Handheld Showerhead
4	OP-460011 Mounting Screw	B	OP-460021 60" SST Hose
5	OP-490029 3/32" Allen Screw	C	OP-460020 Vacuum Breaker
		D1	OP-460006 Drop Ell (For P-4430)
		D2	OP-460013 Two Way Diverter (For P-4420)
		E	OP-560001 Mounting Kit
		F	OP-460009 Brass Mounts
		G	OP-460010 24" Slide Bar
		H	OP-490011 3/32" Allen Wrench
		1	OP-460023 Washer
		2	OP-440048 1.75 GPM Restrictor



For more care information or trouble shooting inquiries about your Olympia product, please call:
OLYMPIA FAUCETS, INC. (888) 772-7701
 Central Standard Time: 8:00am ~ 7:00pm
www.olympiafaucets.com

INSTALLATION INSTRUCTIONS

Tools you will need:

- Plumbers Putty
- Teflon Tape
- Screwdriver
- Flexible Supply Lines
- Pipe Wrench
- Adjustable Wrench
- Basin Wrench
- Soft Cloth

Handheld Shower Set INSTALLATION:

1. Carefully shut off water supply.
2. Position screw hole locations for 25-1/4" slide bar mounting brackets at the desired height of the user, at least 54" above the ground. Drill 1/4" holes perpendicular to the ground for each of the anchor screws
3. Place plastic anchor screws into holes using a hammer to tap it in flush with the wall.
3. Attach brass slide mounts(F) using 3/32" hex wrench to tighten set screws.
4. **For P-4430** :- Mount drop ell(D1) at least 2" above the rim of tub or shower drain.
For P-4420 :- Install two way diverter (D2) male end to shower arm. Front end to Showerhead. Use teflong tape at threaded connections.
5. Secure drop ell(D1) mount with silicon caulking.
6. Install Vacuum Breaker (C) between drop ell (D1) or two way diverter (D2) and 60" SST flex hose (B).
7. Check hose connections between showerhead(A) and drop ell(D1) or two way diverter (D2) for any leak.